

# QUARTZ EXPERT ADVISOR

## User's Manual

- Attaching EA to a chart
- EA trading logic
- Settings
- Money Management
- Alerts
- Risk Disclosure

## :: ATTACHING EXPERT ADVISOR TO a CHART ::

You received Expert Advisor (EA) as .ex4 file. To start trading with Expert Advisor you need to get through 5 simple steps:

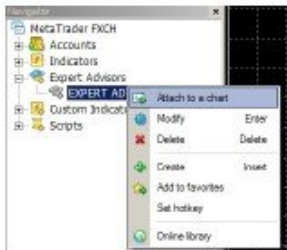
**STEP 1** – Paste Expert Advisor into “Experts” folder in Meta Trader folder on your PC\Laptop. Usually it looks like this:

C:\Program Files\Meta Trader 4\experts\

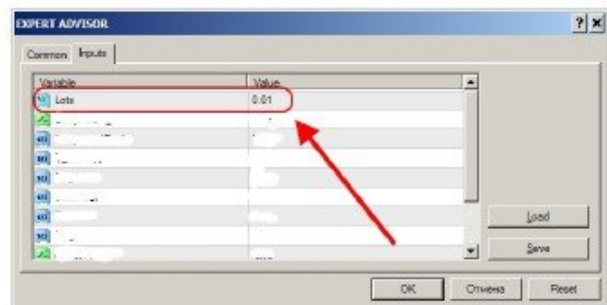
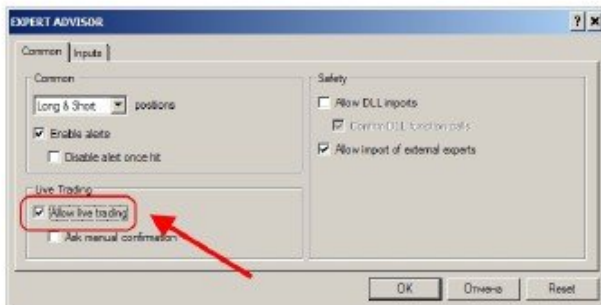
**STEP 2** – Launch Meta Trader 4 platform and find Expert Advisor in NAVIGATOR window:



**STEP 3** – Attach (or drag and drop) Expert Advisor to USD\JPY chart.

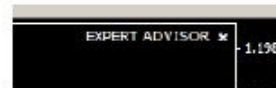


**STEP 4** – Click “Allow live trading” in pop-up window and SET “Lotsize” according your deposit (see Money Management section):

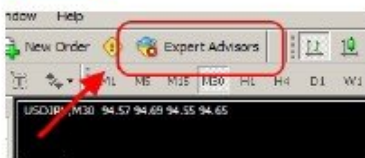


AND CLICK OK!

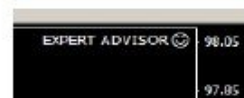
After that you should see disabled Expert Advisor on your chart:



**STEP 5** – ENABLE Experts Advisors in Meta Trader by clicking Experts Advisors button on the top:



When Expert Advisor is ENABLED and ready to trade  
YOU WILL SEE SMILING FACE AT THE RIGHT TOP OF THE CHART:



Quartz Expert Advisor has specific algorithm that allows decreasing needed starting lotsize.

Expert Advisor trades on price action and does not depend on any timeframe. Quartz EA has inside coded feature for changing algorithm is currency rolls 300 pips one side without retracement.

Compound feature allows you to trade with 40K and 0.1 and add 0.01 each 4K which finally generates impressive performance.

:: SETTINGS ::

**Lots (0.01 default)** – value of FIRST order lotsize. "Lots" need to be set according your deposit. Use Money Management table for PROPER lotsize per deposit.

**Compounding (false - default)** – "true" enables compounding ("CompoundEach") option. See "CompoundEach". If "true" setting "Lots" do not work because the value of first order lotsize is determined by compounding formula.

**CompoundEach (30000 default)** – works ONLY if "Compounding" option is set to "true". This is the value of deposit for each 0.01 lot. See examples:

- 1) Compounding: true  
CompoundEach: 30000

Your deposit: 100 000

Expert Advisor will open first trade with 0.03 lots ( $100000 : 30000 = 3 \times 0.01 = 0.03$ )

- 2) Compounding: true  
CompoundEach: 3500

Your deposit: 23 000

Expert Advisor will open first trade with 0.06 lots ( $23000 : 3500 = 6 \times 0.01 = 0.06$ )

**TakeProfit (30 default)** – value of first order Take Profit. Please, do not change this setting because this may influence the whole Expert Advisor's trading cycle.

**StopLoss (400 default)** – total stop loss value for each opened order. Stop Loss is used as emergency get out from the market in the worst scenario, but with our research for last 10 years we did not see any SL. All trades were closed on overall profit due to specific algorithm of changing lot volumes.

**StartHour (0 default)**  
**EndHour (24 default)** – Schedule setting for trades who prefer to run Expert Advisor at specific time. If settings are default "0" and "24" Expert Advisor will trade 24/7. If you want to limit Expert Advisor trading, customize these setting according your schedule. See example:

StartHour = 8  
EndHour = 15

At 8.00 (Meta Trader time) after first tick Expert Advisor will place an order and start its cycle.

After 15.00 Expert Advisor will not start any new trading cycle, BUT WILL FINISH THE CURRENT ONE. This means that Expert Advisor will keep adding positions to get the final profit, but after this will be done, Expert Advisor will STOP.

**Magic (2468 default)** – Magic Number setting which allows to trade different Expert Advisors at the same pair. If you run another Expert Advisor or the same Expert Advisor but with different settings, please make sure you have different magic numbers at USD\JPY charts.

**CloseAllNow (false - default)** – This is emergency feature that helps you to CLOSE ALL open trades and DELETE all pending orders. If for some reason you decided to stop trading EA and you want to leave market fast, just make these 3 easy steps:

- 1) Click right button on a chart and choose Expert Advisors-Properties OR simply click F7
- 2) Got to CloseAll set and choose TRUE
- 3) Click OK.

On the next tick EA will start closing and deleting all trades and orders.

To start trading again, do the same, but set CloseAll = false and click OK.

IMPORTANT NOTICE: if you leave the market right in the middle of hedging cycle, this will decrease your profit or lead to loss. We recommend running EA 24 hrs a day or using Time Schedule settings to close cycles in profit.

**UseMACD (false - default)** – If "true", Expert Advisor will place ONE SIDE trade according MACD indicator value (0,14,26,9). MacD is built in Expert Advisor code so you do not need to add it to a chart.

**BrokerMode (1 default)** - This feature makes EA flexible to different broker's conditions (market on instant execution). There 2 modes that can be used here:

BrokerMode=1. For brokers who allow opening trades with set TP and SL. Most brokers do this.

BrokerMode=2. For brokers who does not allow opening trades with set TP and SL. If for some reason EA does not open any trades after ticks, try manually opening any trade with already set TP and SL. If this will not be possible, it means your broker allow you open market trade and only then modify it with needed TP and SL. In this case you need to set BrokerMode to "2".

**FridayCloseTime (24 default)** - This feature closes cycle after its set time on Friday. If "24" Expert Advisor will keep trading till market closure and will start again on the first tick of market opening. But if you want to leave market at certain time at Friday, please use this option. Here is an example:

FridayCloseTime = 10

After Friday 10:00 of your broker's time EA will not open new cycle. EA will finish current cycle and stop trading. Please mention, that 10:00 does not mean that EA will close all trades and orders at 10:00. EA has to close cycle only in profit and this may take some time according market behavior.

**ATTENTION: Expert Advisor is already customized to USD\JPY trading behavior and any parameters' change may influence Expert Advisor's performance and may lead to deposit damage. Please use DEFAULT settings and change only LOTSIZE according your deposit!**

### :: MONEY MANAGEMENT ::

All money management calculations are made account with 1:100 leverage.  
You may lower the deposit or increase the starting lotsize with higher leverages at your risk!

HIGH (aggressive) RISK MM		
Deposit	Lotsize	Average Monthly Income
\$ 3 600	0.01 (1 pip = \$ 0.10)	37-40 %

High Risk MM deals with high returns and high draw down as well. Our testing showed drawdown of 85-90 % once.

MEDIUM RISK MM		
Deposit	Lotsize	Average Monthly Income
\$ 5 400	0.01 (1 pip = \$ 0.10)	25 %

Medium risk shows drawdown of 40-45 % drawdown.

LOW RISK MM		
Deposit	Lotsize	Average Monthly Income
\$ 13 000	0.01 (1 pip = \$ 0.10)	10 %

With monthly 10 % and total drawdown of maximum 20 % LOW RISK Money Management is perfect for traders who prefer consistency of profit rather than high yield one-night returns.

### YOU CAN START WITH only \$ 300!!!

Some traders may say that having \$ 30 000 account is not that achievable these days. Yes, but you can afford \$ 1000-3000. All you have to do is find out brokerage which allows you trade CENTS or MICRO ACCOUNTS. We know 2 of them:

AlpariUK (<http://www.alpari.uk>) – UK brokerage gives you micro accounts and classic accounts.

E-Global (<http://www.eglobal-forex.com/>) – EU brokerage gives you CENTS accounts. You can deposit \$ 300 and you will see 30 000 cents on your account. This will not mess up Expert Advisor as it will

trade cents the same way it trades dollars. With such brokerage on cents you can start with \$ 300 for HIGH risk model and with \$ 1000 for LOW risk model. Performance will be the same: 10-37 % !!!

### **Risk Disclosure**

Forex trading has large potential rewards, but also large potential risk. You must be aware of the risks and be willing to accept them in order to invest in the Forex market. Don't trade with money you can't afford to lose. Information presented on a website is neither a solicitation nor an offer to trade Forex. No representation is being made that any account will or is likely to achieve profits or losses similar to those discussed on this website. The past performance of any trading system or methodology is not necessarily indicative of future results.

We expect that you will respect shared materials and products and will not share them with any third parties or publish them electronically. We will ban your community membership and stop providing service and products without refund if you break this rule. Our hired inspectors who monitor internet on this matter will notify us immediately in case of any shared information.

We expect that you have basic knowledge of Forex trading and Meta Trader 4 platform, and we keep the right not to provide support if you simply did not read experts' manuals or faq sections of our website.

We expect that you will respect other participants in community and will not publish any materials or opinions that may offend others.

Though we provide several models of Risk Management, such as HIGH, MEDIUM and LOW risk, we cannot guarantee future performance due to risky nature of Forex Market.

